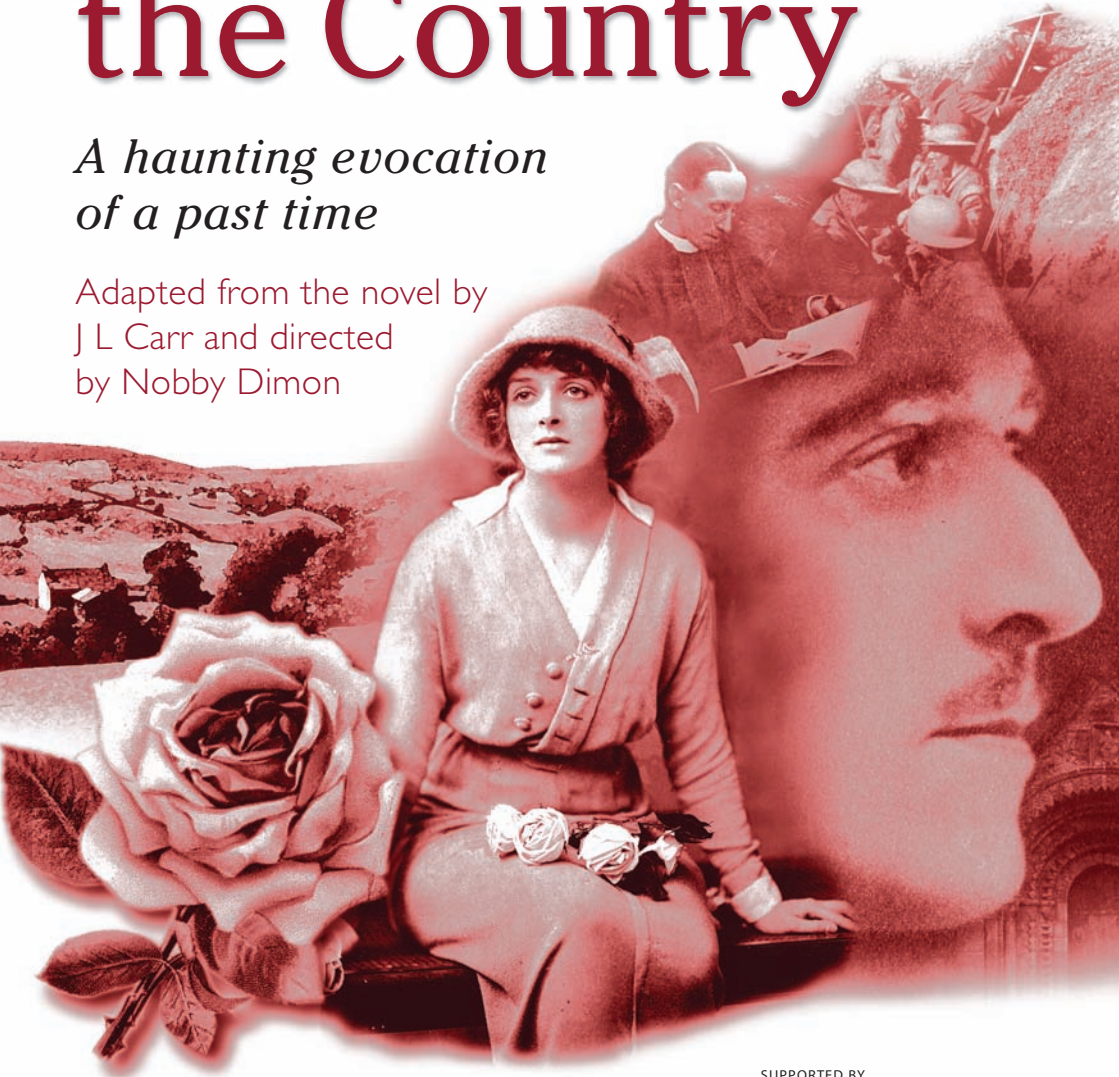


A Month in the Country

NORTH
COUNTRY
THEATRE

*A haunting evocation
of a past time*

Adapted from the novel by
J L Carr and directed
by Nobby Dimon



SUPPORTED BY



Programme £2



Supported using public funding by
**ARTS COUNCIL
ENGLAND**



THE GREEN HOWARDS MUSEUM IS CHANGING

New flexible display spaces, transformed exhibition galleries and an exciting education and community programme bring our amazing collection to life.

We're looking forward to welcoming you when the museum reopens in November.

**CELEBRATE WITH US: 1 free second adult entry
OR up to two free child admissions
OR 15% discount in the museum shop**
(offers valid between 1 November 2014 and 29 March 2015 with this advert)

GREEN HOWARDS MUSEUM
www.greenhowards.org.uk



North Country Theatre is a professional theatre company based in the beautiful market town of Richmond in North Yorkshire. Under the direction of its Artistic Director Nobby Dimon it has created many original new plays along with exciting adaptations of classic novels since it began in 1996. It has a special understanding of the nature of touring to a rural area as well as educational and site specific drama. It is committed to giving exciting, entertaining and intelligent theatre to audiences whose access to live theatre is limited by geography or who

simply enjoy sharing the experience of live theatre in their local community.

We would like to express our gratitude to the local promoters, the majority of whom are unpaid, whose hard work allows us to visit their venues. We'd also like to thank our Angels who by committing to regular giving have not only endorsed our work but kept the company on the road for another three years at least. To find out more download the brochure from www.northcountrytheatre.com or ring 01748 825362.

» Andy Thursfield is proud to have designed North Country Theatre's publicity material since 2000. He donated the time spent designing this programme in support of the company.
Andy Thursfield | Graphic Designer | 01748 829507



Dawn Clarkson Associates
Accountants and Business Advisors
Minding your business

- Monthly Bookkeeping
- VAT Returns
- Company Accounts
- Sole trader & Partnership Accounts
- Business Start-ups
- Business Coaching
- Payroll
- Tax Returns
- CIS Returns

ESTABLISHED REPUTATION FOR SERVING SMALL BUSINESSES

Need help getting your books in order?
Call Dawn to discuss a Bookkeeping and Accounting Service to meet your needs at an affordable rate

Tel: 01969 624999 www.dawnclarkson.co.uk
Email: dawn@dawnclarkson.co.uk
Follow us on Twitter @DClarksonAssoc

J. L. Carr

1912 - 1994

Teacher, writer, publisher. Carr went to school in Carlton Minniot near Thirsk where his father worked on the railways. Although he lived most of his life in the South of England his affection for his North Country origins is reflected in the setting of many of his award-winning novels, *A Day in Summer*, *A Month in the Country*, *How Steeple Sinderby won the FA Cup*, and many others. As well as writing he set up and ran his own publishing house. The Quince Tree Press is still run by his family and we are grateful to Bob and Jane Carr for permission to recreate our first stage adaptation.

You can purchase one of J L Carr's own beautifully illustrated Quince Tree Press editions of *A Month in the Country* at the special discount price of £6 after the show this evening.



Director's Note: War and Peace

2014 has been a year in which the First World War has been much in the media and in our minds. Much of the commemoration, retelling and exploration has naturally focused on the horrors of that war. Carr's novel looks more obliquely at the trauma of those years by telling a tale of the aftermath, of survival and healing, even a kind of "coming to terms" with grief and loss. I think it is a story about finding peace.

Castle Hill Bookshop is pleased to be associated with North Country Theatre's *A Month in the Country*. All of J L Carr's novels are available from us.

CASTLE HILL BOOKSHOP

1 CASTLE HILL • RICHMOND • NORTH YORKSHIRE • DL10 4QP

 info@castlehillbookshop.co.uk

YOUR LOCAL INDEPENDENT BOOKSELLER

24 hour order service ☎ 01748 824243

www.castlehillbookshop.co.uk

J L Carr's *A Month in the Country*

Adapted for the stage
and directed by Nobby Dimon

Cast

Birkin	Mark Cronfield
Ellerbeck	Nobby Dimon
Reverend Keach	Thomas Frere
Moon	William Vasey
Kathy Ellerbeck / Alice Keach	Ashley Tucker
Set design	Simon Pell
Sound	Dave Harris
Costume	Liz Kirby
Lighting design	Tony Wilcock
Rehearsal stage manager	Lindsay Trenholme
Production assistant	Beki Harrison
Administration	Colin Bailey, Gillian Howells

THERE WILL BE AN INTERVAL, DURATION TO BE ANNOUNCED

The first performance of this adaptation was on 30th October 2002 at The Zetland Centre, Richmond (now re-named The Influence Church). The devising company and original cast were David Smith, Martin Dower, Rebecca Smart and David Reakes.

**We are grateful for sponsorship from the many Angels of the North Country
and of the Friends of the North Country.**

Also Richmond Town Council, Leyburn and Mid Wensleydale Partnership, the Elm House Trust, the Upper Wensleydale Newsletter, thecitysecret, John Blenkiron & Sons, Dawn Clarkson & Associates, Yorkshire Country Holidays.

We'd also like to thank people who support the company throughout the year along with those who have helped with this production: Andy Thursfield, Helen Warry, Ailsa Hunter, Richmond Operatic Society, Influence Church, Richmond Amateur Dramatic Society, Carillion, Julian Farrand, Brenda Hale, John Ward, Caroline Woodroffe, Jenny & Tony Power, Mike Nicholls, Amanda & Steve Cook, Faye & David Doorbar, Geoff Wall, Tim Kendall, Judith Brickwood, Donald & Nina Cline, Wilma Burniston, Liz Floyd, Mike Potter.

Simon Pell *Set design*

Trained at the Slade and worked as a Scenic Artist at the National Theatre and in the West End before moving to Country Durham in 1987. Since then has designed over 150 shows for a variety of companies, including; The Gala Theatre, Durham (resident designer 2006-10), Welfare State International, Durham Theatre Co, Cleveland Theatre Co, Promenade Promotions, and Jack Drum Arts. He is also Artistic Director of The Castle Players in Barnard Castle. He is delighted to be working for North Country Theatre again – this being the twelfth show he has designed for them since 1997.

Tony Wilcock *Lighting*

Tony is currently the Production Manager at The Georgian Theatre Royal but has worked for many national touring companies across the UK and worldwide including Northern BroadSides

and Jean Anne Ryan Worldwide Productions. He worked on North Country Theatre's production of *The Lost World* and *Blame it on Bartle!* and looks forward to working with them once again on *A Month in the Country*.

Dave Harris *Sound*

Dave has written music for theatre, television and film, is an award winning songwriter and is also a session musician who has appeared on many albums and radio and television broadcasts. His previous work for North Country Theatre includes music direction and arrangement for *The Passion Plays*, *Last Dance of a Dalesman*, and *Blame it on Bartle!*, composing and recording the soundtrack for *2001 Space Idiocy*, *Moll Flanders*, *The Prisoner of Zenda*, the tenth anniversary production of *The 39 Steps*, *The Rocking Horse Winner* and *The Lighthouse on Shivering Sands*.

Nobby Dimon

Has been the Artistic Director of North Country Theatre since it was founded in 1996, writing, adapting as well as directing most of the company's output.



His adaptation with Simon Corble of Buchan's *The 39 Steps* inspired the West End Production that received an Olivier Award as BEST NEW COMEDY in February 2007, took the both Critics' and People's Choice Awards plus a couple of Tonys on Broadway. His adaptation of DH Lawrence's *The Rocking Horse Winner*, received rave reviews locally, regionally and nationally.

He has also directed for Cleveland Theatre Company, Harrogate Theatre, Durham Theatre Company, Charivari and Snap Theatre.

Ludlow Festival (*A Midsummer Night's Dream*) and Liverpool (*Candide*).

He has toured vast tracts of Britain in shows such as *Bittersweet*, *Tess of the D'Urbervilles*, *The Great Gatsby* and *Return to the Forbidden Planet* and appeared on the Discovery Channel, HTV and Nickelodeon as well as on *The Royal* for ITV and in films: *The Spell* and *The Obelisk*.

Most recently he has spent time in Bristol performing in *The Two Gentlemen of Verona* for SATTf and, earlier this year, performed in London and on tour with M6 Theatre Company in *Grandpa's Railway*.

Ashley Tucker

Ashley graduated from Birmingham School of Acting in the summer of 2012. Credits whilst training include Countess Charlotte Malcolm in *A Little Night Music*, Castiza in *The Revenger's Tragedy* and Theresa in *The May Queen*. After training Ashley then went on to perform in *Salome* at The Camden Fringe before commencing a seven month tour of *Jekkyll's Potion* for Vienna's English Theatre. Having already had a taste of 'The North' when performing at The Maltings Theatre Berwick-Upon-Tweed, as Cinderella in *Cinderella*, Ashley is delighted to be playing Alice and Kathy in *A Month In The Country*.



Mark Cronfield

A Month In The Country is Mark's 10th production for North Country Theatre, including *Blood Wedding in Wensleydale*, *The Rocking Horse Winner*, and most recently as the eponymous hero of the hugely enjoyable community play; *Blame It On Bartle*.



He lives in Bishopdale with his wife and children, the latest addition arriving the day before rehearsals started.

Thomas Frere

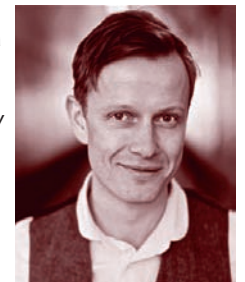
This is Thomas' 8th show with the company having worked on productions which include *The 39 Steps*, *The Passion Plays*, *The Man Who would be King* and *The Rocking Horse Winner*.




Elsewhere, he has performed in rep theatres around the country including seasons at Lancaster (*Comedy of Errors*, *Romeo and Juliet*, *Sleeping Beauty*); Bolton (*Christmas Carol*); West Yorkshire Playhouse (*Wind in the Willows*); York (*Tom Jones/Moll Flanders*); Southampton (*The Seduction of Anne Boleyn*);

William Vasey


William trained at Drama Studio London. Credits include *Dorian Gray* in *The Picture of Dorian Gray* (European/UK tour/ Greenwich Theatre); Miranda/Antonio in *The Tempest* with The Lord Chamberlain's Men (UK/European tour) *You Could Move* and *Snapshots* with Outbox at Arcola/Contact Theatre; *Romeo in Romeo and Juliet* (European tour/Cochrane Theatre); Antonio in *Twelfth Night* (Theatre Royal Margate); Lord Darlington in *Lady Windermere's Fan* (European Arts Company). Recent short film *On the Edge* in conjunction with MIND derived from a theatre show at BBC.



Be an Angel, Become a Friend



Since 2012 North Country Theatre has been able to continue touring thanks to the investment of hundreds of Angels and Friends, whose donations help replace regular Arts Council England funding. Many Angels have committed to making an annual contribution of £100 though we have Cherubs and Archangels too. If you would like to help keep North Country on the road please fill in the form below or ring Gillian Howells on 01748 825362.



I / we would like to become an Angel investing £ each month / quarter / year and have set up a standing order starting from ___ / ___ / ___ for at least years (e.g. £9 a month for 3 years)

I / we would like to make a donation of £

NAME

ADDRESS

PHONE

EMAIL

I have used electronic banking I enclose a cheque made payable to North Country Theatre

Our bank details for setting up your standing order and for electronic banking:

Yorkshire Bank, 1 Market Place, Richmond DL10 4HX

Sort code: 05 – 07 – 12 Account no: 39492035 Account name: North Country Theatre

I / We would like to join the Friends of North Country Theatre [annual subscription is £25 per household - we will send your details on to the Friends Membership Secretary]

A Month in the Country

NORTH COUNTRY theatre

If you enjoyed this performance please tell your friends they can see it at the following venues:

Please check our website
www.northcountrytheatre.com
for news of forthcoming productions and to find out how you can become
An Angel of the North Country or
A Friend.

NORTH COUNTRY THEATRE

3 Rosemary Lane Richmond DL10 4DP

Tel: 01748 825288

Email: office@northcountrytheatre.com

www.northcountrytheatre.com

TICKETS & INFORMATION FROM THESE LOCAL PROMOTERS, START TIMES VARY, PLEASE CHECK WITH VENUE

OCTOBER 2014

Wed 1	Richmond, Georgian Theatre Royal	DL10 4DW	01748 825252
Thu 2	Richmond, Georgian Theatre Royal	DL10 4DW	01748 825252
Fri 3	Sawley Village Hall	HG4 3EQ	01765 620250
Sat 4	Sutton on the Forest, Grey Village Hall	YO61 1DP	01347 810978
Tue 7	Husthwaite Village Hall	YO61 4PF	01347 868130
Wed 8	West Burton Village Hall	DL8 4JY	01969 663373
Thu 9	Ilkley Playhouse (Wharfeside Auditorium)	LS29 8DW	www.ilkleyliteraturefestival.org.uk
Fri 10	Kirklington Village Hall	DL8 2NJ	01845 567295
Sat 11	Lanchester Community Centre	DH7 0JQ	01207 521275 & village newsagent
Tue 14	Edgton Village Hall	SY8 7HN	01588 680302 / 672248
Wed 15	Grindleford, The Maynard	S32 2HE	01433 639581
Thu 16	Long Newton, The Wilson Centre	TS21 1DD	01642 583002
Fri 17	Helmsley Arts Centre	YO62 5DW	01439 771700
Sat 18	Northallerton, The Forum	DL6 1LP	01609 772620 & Pot of Gold Wool Shop 777729
Tue 21	Thornton le Beans Village Hall	DL6 3SL	01609 780208
Wed 22	Peebles, Eastgate Theatre & Arts Centre	EH45 8AD	01721 725777
Thu 23	Arncliffe, Armerdale Hall	BD23 5QE	www.littondale.net
Fri 24	Barnard Castle, The Witham	DL12 8LY	01833 631107 / www.thewitham.org.uk
Sat 25	Newton le Willows Village Hall	DL8 1SH	01677 450715
Tue 28	Scarborough, Stephen Joseph Theatre	YO11 1JW	01723 370541 / www.sjt.uk.com
Wed 29	Torpenhow Village Hall	CA7 1HT	01697 371514 / Wigton Library 366150
Thu 30	Bowness, The Old Laundry Theatre	LA23 3BX	08445 040604 / www.oldlaundrytheatre.co.uk
Fri 31	Gosforth Public Hall	CA20 1EL	01946 725700 / www.artsoutwest.com

NOVEMBER

Sat 1	Hunton Village Hall	DL8 1OZ	01677 450545 / 07702 521410
Thu 6	Ripon Grammar School	HG4 2DG	01765 602647 / The Little Ripon Bookshop 6066689
Fri 7	North Stainley Village Hall	HG4 3JT	01765 635236
Sat 8	Pateley Bridge, Bishopside & Beverley Memorial Hall	HG3 5JS	01423 712157 / 07889 676992
Tue 11	Stockton on Tees, Holy Trinity with St. Mark Church	TS19 7QU	01642 653643
Wed 12	Terrington Village Hall	YO60 6QB	01653 648249
Thu 13	Darley Village Memorial Hall	HG3 2RP	01423 780863 / 780673
Fri 14	Great Broughton Village Hall	TS9 7ER	01642 712437
Sat 15	Leyburn Methodist Hall (Matinée)	DL8 5AT	www.northcountrytheatre.com / 01748 825288
Sat 15	Leyburn Methodist Hall	DL8 5AT	www.northcountrytheatre.com / 01748 825288
Tue 18	Knayton Village Hall	YO7 4AZ	01845 537457
Wed 19	Masham Town Hall	HG4 4DY	01765 680200 / Masham Community Office
Thu 20	Glentworth Village Hall	DN21 5DF	01427 667118 / 667047
Fri 21	Barton upon Humber, Ropewalk	DN18 5JT	01652 660380
Sat 22	Yarm Fellowship Hall	TS15 9BU	01642 888786
Tue 25	Melrose, The Wynd	TD6 9PA	01896 820028
Wed 26	Carlops Village Hall	EH26 9NF	07773 024024
Thu 27	Bellerby Memorial Hall	DL8 5QN	01969 622470 / Cross Keys Inn 624702
Fri 28	Hawes, Dales Countryside Museum	DL8 3NT	01969 666210
Sat 29	Hutton Rudby Village Hall	TS15 0HP	01642 701744 / 701586

DECEMBER

Tue 2	Gilling West Village Hall	DL10 5JG	01748 850158
Wed 3	Marton cum Grafton Village Hall	YO51 9QY	01423 325179
Thu 4	Baldersby, Queen Mary's School	YO7 3BZ	Private Performance
Fri 5	Clifford Village Hall	LS23 6HY	01937 530652 / www.clifforddramagroup.org.uk
Sat 6	Reeth Memorial Hall	DL11 6QT	01748 884759 / www.reethmemorialhall.co.uk